

LINE AS SURVEYED

WILLIAM O. DREWING, INC.
D. B. 1314 PG. 552

D. B. 1287 PG. 214

ALBERT ABRAMS D. B. 1143 PG. 410

33.443 ACRES

W. L. DAIRY, A PARTNERSHIP
D. B. 1287 PG. 214

SILBA BROWN
D. B. 1296 PG. 40

NEAL D. GROGAN, SR., et. ux.
D. B. 1432 PG. 743

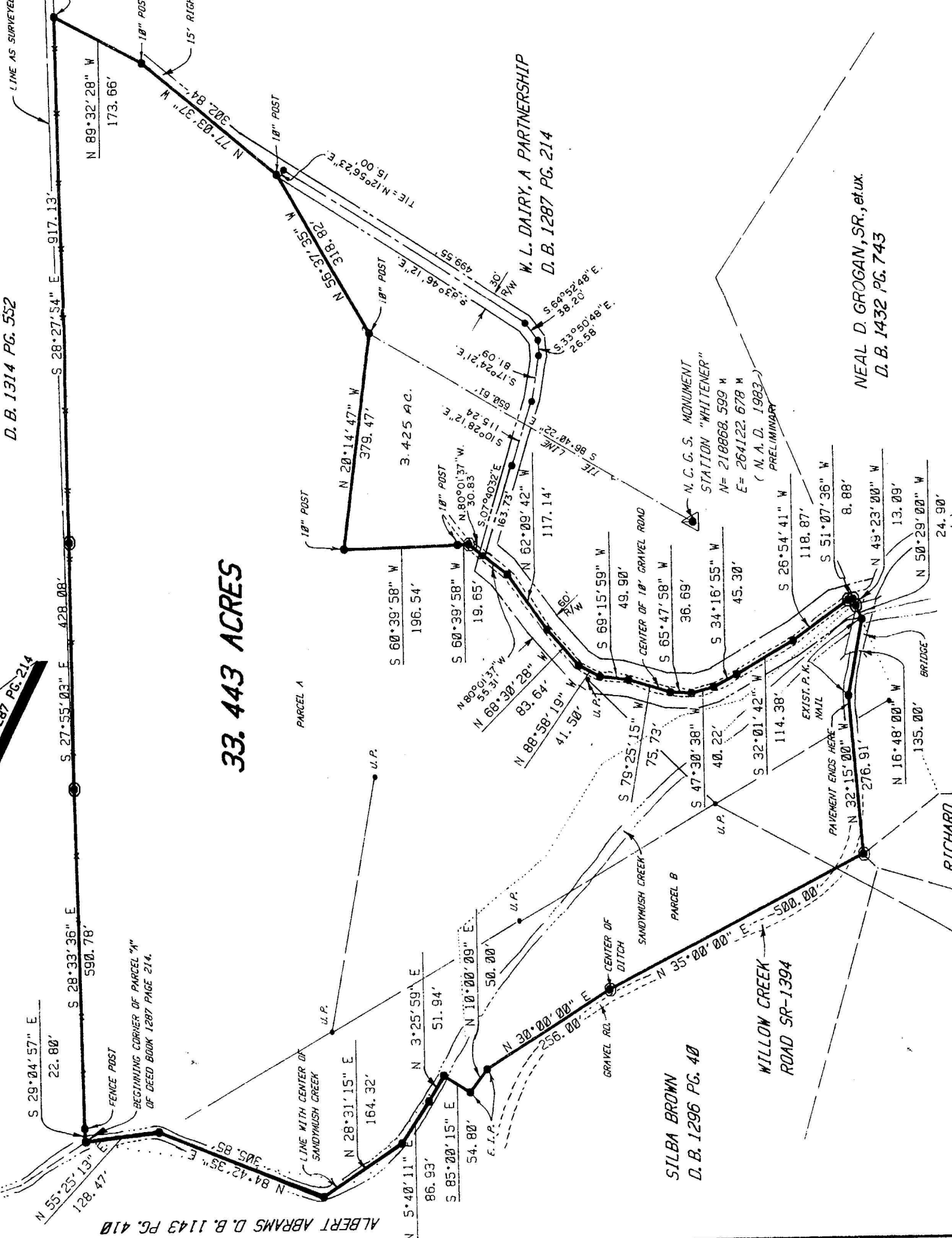
RICHARD

WILLOW CREEK
ROAD SR-1394

N. C. G. S. MONUMENT
STATION "WHITENER"
N= 218868.599 M
E= 264122.678 M
(N. A. D. 1983)
PRELIMINARY

PARCEL A

PARCEL B



LEGEND